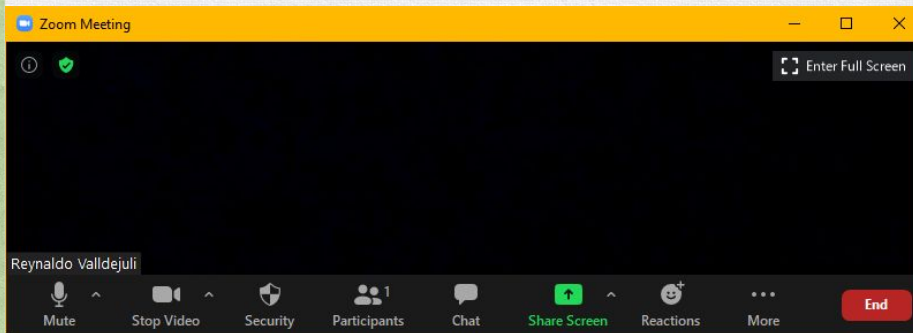


# Zoom Meeting Preparation

- Please make sure your phone or computer is muted to minimize background noise.
  - To do this, hover over the bottom left-hand side of your screen and click “Mute.”
- Please make sure you have turned off your camera to save bandwidth and prevent any connectivity issues.
  - To do this, hover over the bottom left-hand side of your screen and click “Stop Video.”
- Please submit questions during the presentation in the “Chat” function located on the bottom of your screen.



**NOTICE: In accordance with the Americans with Disabilities Act, if you need special assistance at this meeting please contact [Idoecommunications@la.gov](mailto:Idoecommunications@la.gov).**





---

# Career & College Readiness

## July 15, 2021

---







---

**Starting in August  
Career & College Readiness  
will hold office hours on the  
1st and 3rd Thursday of each  
month at 3:00 pm.**

---

# Pathway Initiatives and Readiness Support





# Ready to Achieve! 2021-2022 School Operational Guidelines

The Louisiana Department of Education has continued work with our partners at the Louisiana Department of Health (LDH) and Children’s Hospital of New Orleans (CHNOLA) to review the latest CDC guidelines surrounding school operations.

The Department released “[Ready to Achieve!](#),” a set of operational guidance for K-12 school systems to use in the 2021-2022 school year. This document serves as a guidebook to best practices for a safe return to in-person learning for the upcoming school year. This document will be updated as necessary to reflect new LDH/CDC guidance as it is released.

*NOTE: Preliminary guidelines were informed by LDH/CDC and subject to change.*



# Ready to Achieve! 2021-2022 School Operational Guidelines Updates

## Contact Tracing and Quarantine Updates:

- School systems **should continue to report positive COVID cases** to the School Reporting Dashboard.
- Contact tracing and quarantining of close contacts **should occur** for each case of COVID-19 identified within the school setting.
- **Close contact** of a case is a person who was **within six feet** from the student for **more than 15 minutes**, determined by the OPH contact tracing process.
- If **both the case and the contact** were engaged in consistent and correct use of a well-fitting face mask AND were within **3 to 6 feet of each other**, then those close contacts **do not need to quarantine**.
- Because there is an increased risk of post-quarantine transmission associated with options to shorten quarantine, **the 14-day quarantine period** should be used in school settings where physical distancing among children is not maintained.



# Ready to Achieve! 2021-2022 School Operational Guidelines Updates

## Group Composition Updates:

- Classrooms with students and teachers who are **not fully vaccinated** and **unable to maintain physical distancing requirements** should be assigned static groups. The static group composition should be maintained for as long as possible.

## Ensure Healthy Food Preparation and Meal Service Updates:

- While eating, ensure 6 feet of distance between students to the maximum extent possible.
- If cafeterias are used, stagger meal times for each group and adhere to maximum group size based on physical distancing requirements.



# Ready to Achieve! 2021-2022 School System Plan Submission

An LEA that receives ARP ESSER funds must, within 30 days of receiving the funds, make publicly available on its website a **Ready to Achieve! plan** for safe return to in-person instruction and continuity of services.

School systems can also meet the 30 day requirement by seeking public comment and **updating their Strong Start 2020 plans** to reflect the Ready to Achieve 2021-2022 guidance.

School systems will [submit a link to their plan](#) to LDOE no later than **September 10**.



# ACT Now Deadline

The Louisiana ACT® NOW program provides funding to purchase prebilled registration ACT test vouchers for eligible students in grades 12 and 10 as described in this application.

**ACT Now assurances are due by July 31.**

Supporting documentation must be submitted after vouchers have been purchased no later than **July 31**. The following documentation and assurances will need to be submitted:

- Documentation that vouchers were purchased through ACT® (cancelled check and invoices)
- A detailed list of who were issued vouchers by **Louisiana Secure ID**
- The completed assurances page
- Please submit one set of documentation per school system to [meredith.mcgovern@la.gov](mailto:meredith.mcgovern@la.gov)



# Advanced Placement Score Reports

2021 AP exam score reports for [Administration 1](#) and [Administration 2](#) will be released on the dates below. If you're looking for the AP student access schedule, visit the [student AP scores website](#).

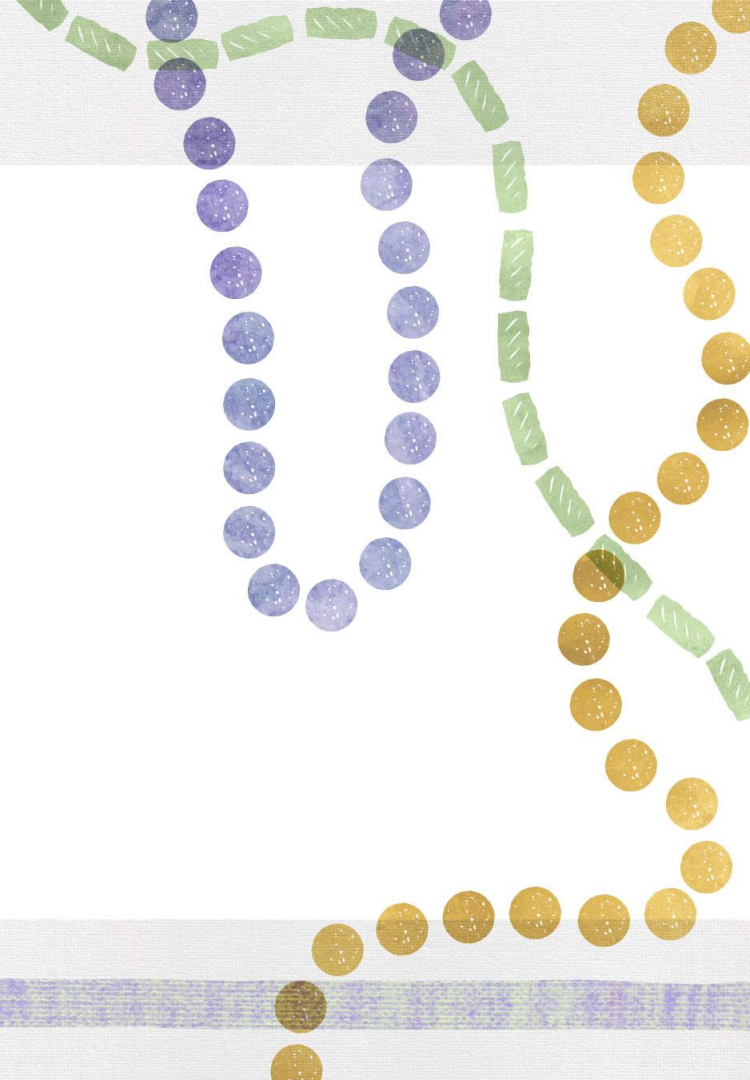
**July 21 at 7 a.m. ET:** [Subject Score Rosters](#) and [Student Score Reports](#)

**July 23 at 8 a.m. ET:** [Instructional Planning Reports](#), [Organization Score Rosters](#), and [Summary Reports](#)

**July 27 at 8 a.m. ET:** Student Datafile and Scholar Award Reports



# Foundational Skills





# Fall 2021 Counselor Institutes

The Fall 2021 Counselor Institutes will take place from October 19-21. The events will occur at various locations around the state from 8:00 a.m. to 11:00 a.m. or 1:00 p.m. to 4:00 p.m.

Registration, location and additional information will be shared in early August. The institutes will provide updates on topics relevant to middle and high school counselors.

Please contact [leslie.gilliland@la.gov](mailto:leslie.gilliland@la.gov) with questions.



# Louisiana Attendance Alliance Meeting

The Louisiana Attendance Alliance is hosting its August statewide monthly meeting on Thursday, August 19 from 7:30 a.m. - 8:30 a.m.

These statewide meetings are open to all districts. The purpose of these monthly meetings will be to review enrollment trends, to share best practices/evidence based practices that increase enrollment and to engage in quality improvement planning.

**Webinar Date and Time:** August 19 at 7:30 a.m.

**Webinar Link:** <https://lsu.zoom.us/j/93027951274>

Please contact [jerrick.hornbeak@la.gov](mailto:jerrick.hornbeak@la.gov) with questions.



# Welcome: Shelneka Adams



Shelneka is a native and current resident of Baker, LA. She is a graduate of Alabama State University in Montgomery, AL.

For the past 15 years, Shelneka has worked with child welfare and advocacy programs. During her tenure at Scotlandville Magnet High School, EBR Schools, she developed several attendance focused programs and psychosocial programs.

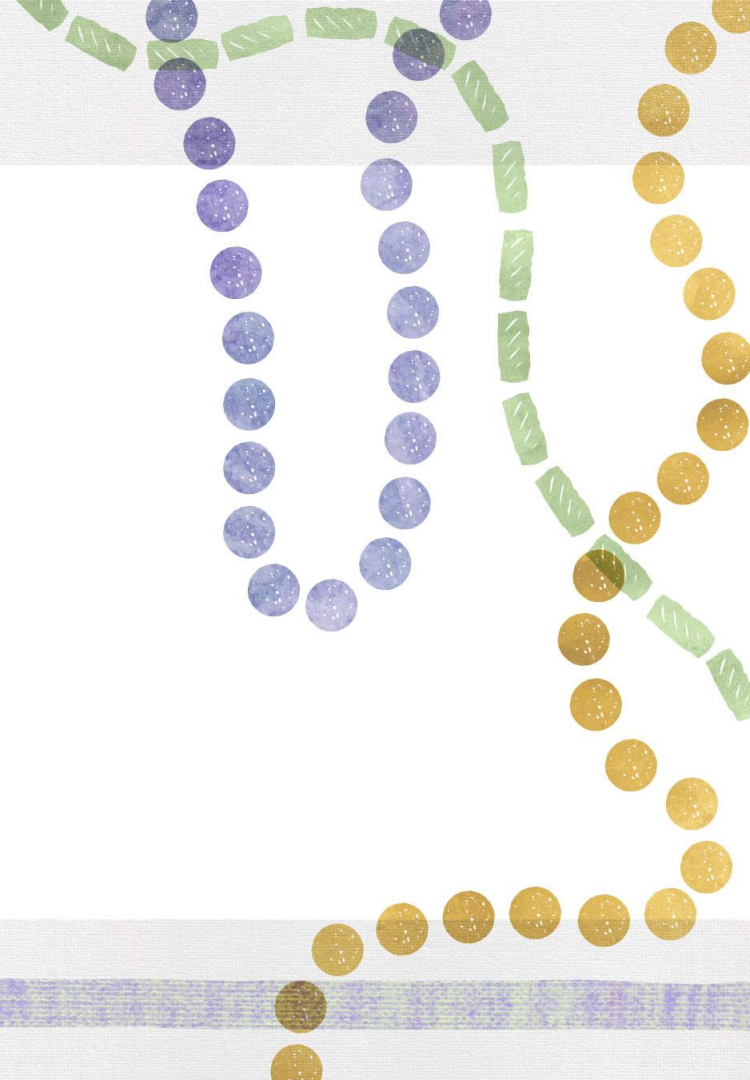
Shelneka's work will focus on child welfare and attendance programming throughout the state.

If you have questions please contact her at [shelneka.adams@la.gov](mailto:shelneka.adams@la.gov).





# Postsecondary Readiness





# Fast Forward Supports

Fast Forward is a program which will allow students to earn either a Jump Start TOPS Tech Career Diploma or a TOPS University Diploma while dually earning an associate degree or participating in a Louisiana Workforce Commission recognized pre-apprenticeship or apprenticeship that either prepares graduates for career or continuing postsecondary education. The Department will continue supporting school systems with the Fast Forward initiative throughout the 2021-2022 school year.

- Monthly follow up sessions with the regional consortia will be scheduled to provide updates on implementation and to discuss any barriers to implementation.
- A presentation in early August on how to adopt a currently approved pathway as well as how to develop pathways (Jump Start vs. TOPS University).
- The team will continue to offer individualized support to school systems as they reach out for implementation best practices.
- A guide is in development with details about all of the approved pathways.



# FAFSA

The Free Application for Federal Student Aid (FAFSA) is what student used to apply for federal grants, work-study and loans for postsecondary education programs.

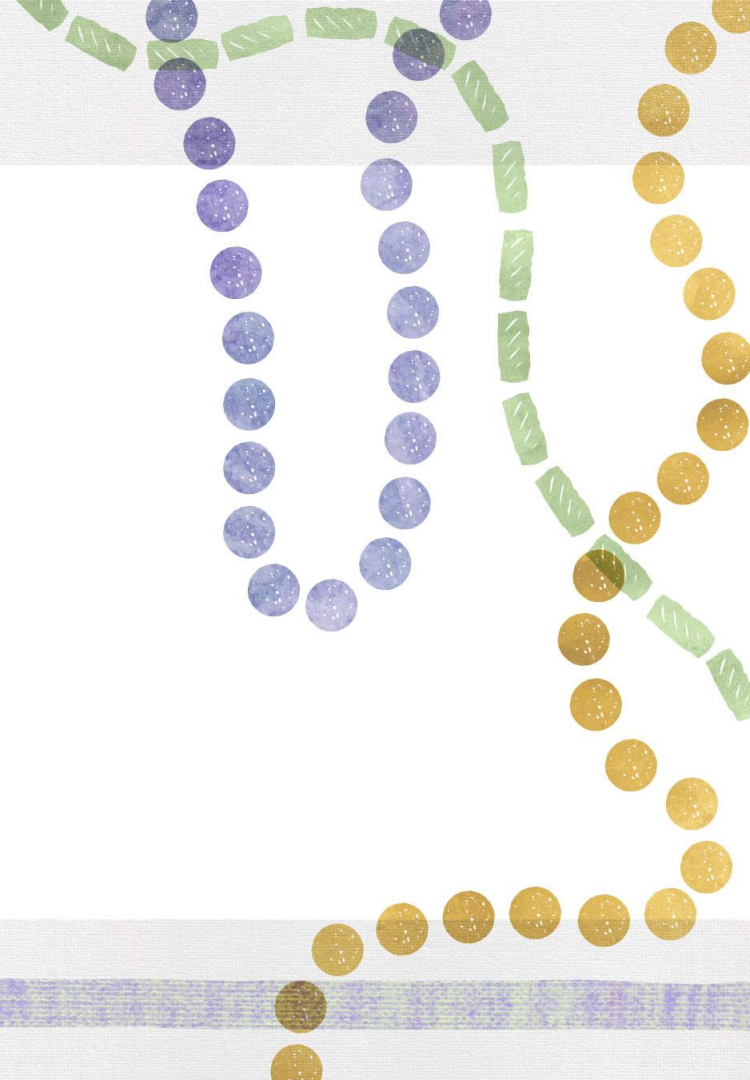
Louisiana ranks number one in the nation for FAFSA completion! To view school or school system FAFSA rates visit LOSFA's [Compete to Complete](#) website. Students who still need assistance in completing a FAFSA can contact [ldefinancialaid@la.gov](mailto:ldefinancialaid@la.gov).

A huge thank you to everyone who assisted students with completing their application.

The 2022-2023 application opens October 1.



# Quality Diplomas





# Fiscal Year 2019-2020 Perkins - Carry Over Funds

LCTCS has extended the Department's Grant Award Notification (GAN) until September 30 for 2019-2020 carry over funds. If school systems **did not expend all allocated funds on or before June 30**, the remaining balance of the 2019-2020 carry over funds will roll forward into the 2021-2022 Super App.

- The Final PER must be submitted in a timely manner in order prevent a delay in the rollover funding being available in the 2021-2022 Super App.
- In order for a school system to be in a posture to draw down the additional prior year funding before the September 30 expiration date, an amendment of the 2021-2022 Super App will be required.
- The 2021-2022 Amendment must be submitted in enough time to allow for the approval of the Amendment and the submission of any reimbursement claims on or before the deadline for these funds.



# Fiscal Year 2020-2021 Perkins

LCTCS has extended the Department's GAN for fiscal year 2020-2021 until July 31, 2021. As such, school systems can continue to draw down funds until July 31. Claims submitted after July 31 will not be accepted.

Please contact [jumpstart@la.gov](mailto:jumpstart@la.gov) for Perkins specific questions.

Please contact [LDOE.GrantsHelpdesk@la.gov](mailto:LDOE.GrantsHelpdesk@la.gov) for eGMS questions.



# Fiscal Year 2021-2022 Perkins

Per the Louisiana Perkins State plan, beginning in fiscal year 2021-2022, Perkins funds will only be utilized for Perkins Eligible CTE Programs of Study included in the regionally identified clusters. The Department received a copy of the LCTCS approved Perkins Programs of Study on June 2, 2021.

On July 7, the Department received further clarity regarding the allocability of secondary activities. Per LCTCS, the guidance document was shared with secondary recipients through their Perkins Regional Coalition Coordinators:

*By definition, a program of study incorporates a broad range of courses including foundational, general education, prerequisite, and universal. The inclusion of any course, especially general education, prerequisite, foundational or universal, as part of a Perkins Eligible CTE Program of Study does not imply that the course and its activities are eligible for Perkins Funding... Only career and technical education activities, recognized postsecondary credentials, and courses whose activities build technical competencies in the Perkins Eligible CTE Programs of Study will be funded with Perkins funds.*



# Fiscal Year 2021-2022 Perkins

Key Items in the guidance:

- Foundational Courses provide an introduction to the subject and may include introduction to essential, integral technical skills aligned to a Program of Study.
  - This would include content such as NCCER Core, CITF Core and EMR which are excluded from Programs of Study due to being aligned to Universal courses.
  - Perkins recipients should indicate which Program of Study this content is foundational to in the budget expenditure.



# Fiscal Year 2021-2022 Perkins

Key Items in the guidance:

- As identified in our state plan, Perkins recipients can continue to fund Career Exploration regardless of the cluster or Program of Study alignment.
  - The definition of Career Exploration has expanded beyond courses such as Quest for Success and activities such as industry field trips.
  - If your Career Exploration is non-traditional, you should state that the item is career exploration in the budget expenditure and include the activity as part of your continuum of career exploration description in Program Specific Question 3.
- As identified in our state plan, Perkins recipients can continue to fund professional development regardless of the cluster or Program of Study alignment.
  - Perkins recipients should state that the item is Professional Development in the budget expenditure and include the activity as part of your continuum of Professional Development description in Program Specific Question 8.



# NCCER Paper Test Final Submission Deadline

As NCCER completes its move to online testing, all paper tests must be submitted and approved by the LDOE Sponsor Representative by **July 23**.

NCCER recommends that instructors submit what has been completed now. In the Registry System, please remember instructors can:

- Create the submissions and save as you go,
- Use the auto-fill date feature, and
- Review your submissions.

For more information, please contact [troy.borne@la.gov](mailto:troy.borne@la.gov).





---

**Reminder:**  
**Starting in August**  
**Career & College Readiness**  
**will hold office hours on the**  
**1st and 3rd Thursday of each**  
**month at 3:00 pm.**

---



# Helpful Information

Schedules, access links and information for the Department's webinars can be found in the [LDOE Weekly Newsletter](#) and [2020-2021 School System Support Calendar](#).

Please reach out to the following contacts with questions:



<a href="mailto:highschoolacademics@la.gov">highschoolacademics@la.gov</a>	General questions about the office and about graduation requirements
<a href="mailto:ldefinancialaid@la.gov">ldefinancialaid@la.gov</a>	Questions related to the financial aid policy or for assistance with FAFSA completion
<a href="mailto:SCA@la.gov">SCA@la.gov</a>	Questions related to Supplemental Course Academy/Course Choice
<a href="mailto:jumpstart@la.gov">jumpstart@la.gov</a>	Questions related to Jump Start
<a href="mailto:PPP@la.gov">PPP@la.gov</a>	Questions related to pupil progression
<a href="mailto:collegereadiness@la.gov">collegereadiness@la.gov</a>	Questions related to dual enrollment or Advanced Placement